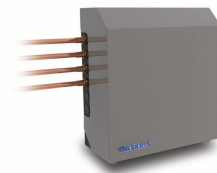


Continuous Water System–Manual

(Manual City Water Backup)



Model CWSM



FUNCTION

Provides emergency water source to back-up your Haskris chiller (if isolation of glycol loop is required, refer to CGS-series).

TECHNICAL DATA

Nominal Flow Rate – GPM (LPM)	5.0 (19.0)
Connections from Emergency Water Source	3/4"
Dimensions (W x D x H)	28.5 x 12.5 x 30.25 in. 72 x 32 x 77 cm.
Shipping Weight	125 Lbs. (57 Kg)

CONTINUOUS WATER SYSTEM–MANUAL

Back-up Water Source

- **Back-up Water Source** = any source of cold water, including city water or in-house chilled water

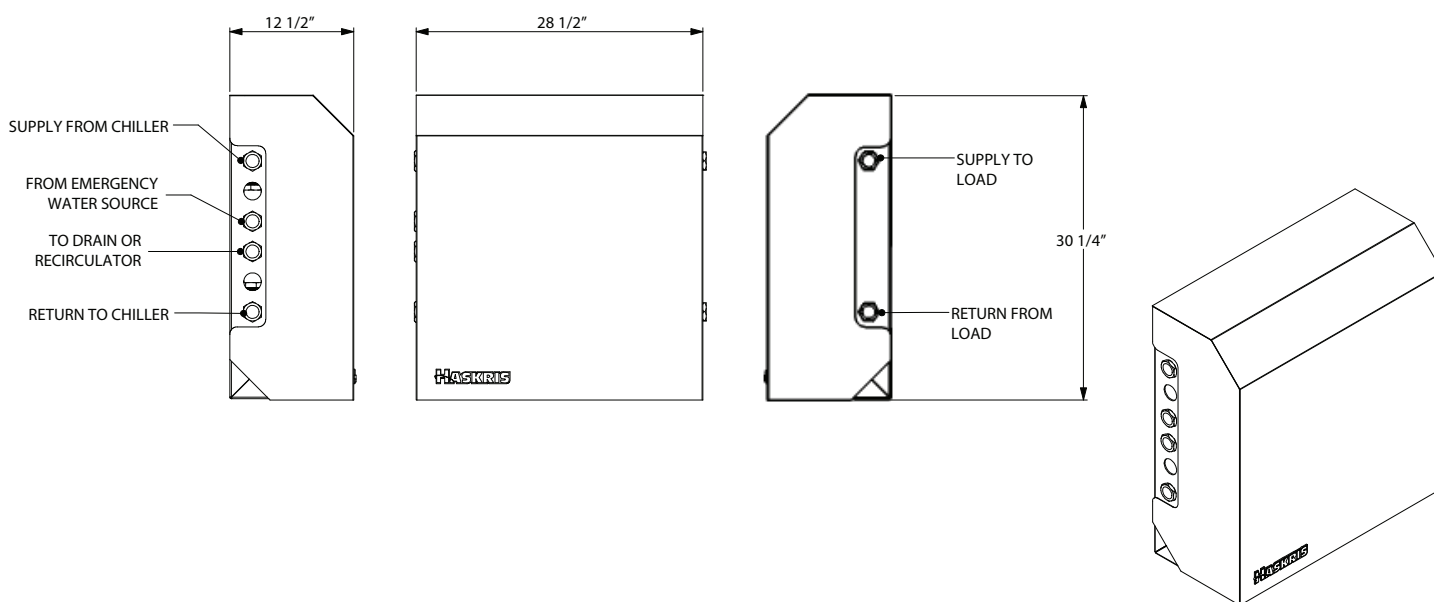
Caution: Consult the equipment manufacturer for the allowable supply water temperature range to the equipment being cooled

Pressure

- **CWS–Allowable Inlet Pressure:** Max. 100 psi

Caution: Consult the equipment manufacturer for the maximum allowable inlet pressure to the equipment being cooled

DIMENSIONAL DATA



CWSM-0111